

EPC121EN



Epikut

The new definition of epic



S.I.N.
Implant System

Epikut

THE NEW DEFINITION OF EPIC

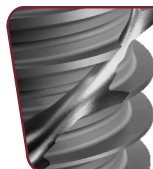
We recreated the concept of epic with EPIKUT.

With a cutting and compressive design, double inverted support screws, this line provide more clinical practicality, predictability and high primary stability for those who seek superior results.



› Hybrid macro geometry, cylindrical body and conic apex

With an exclusive macro geometry and design of cutting screws, EPIKUT is the best choice for cases of immediate load, low density bone and post-extraction alveolus, and it can also be used for all other clinical situations, always following the clinical steps suggested in its drilling system.



› Double inverted support screws

Ensure greater primary stability and insertion torque.

› Ultra-screwable

Profile of double and cutting screws ensure greater insertion speed of the implant.



› Apex

Stability and support for cases with low bone density.



› Exclusive cervical microthreads

Greater bone contact area and improves the dissipation of occlusal forces.



› Adaptation accuracy

With exclusive and high stress resistant prosthetic components.

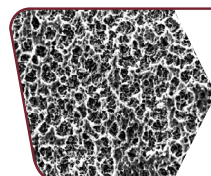
› Manufactured in Cold Worked grade IV titanium

Super light metal, very resistant to corrosion, wear and fracture.



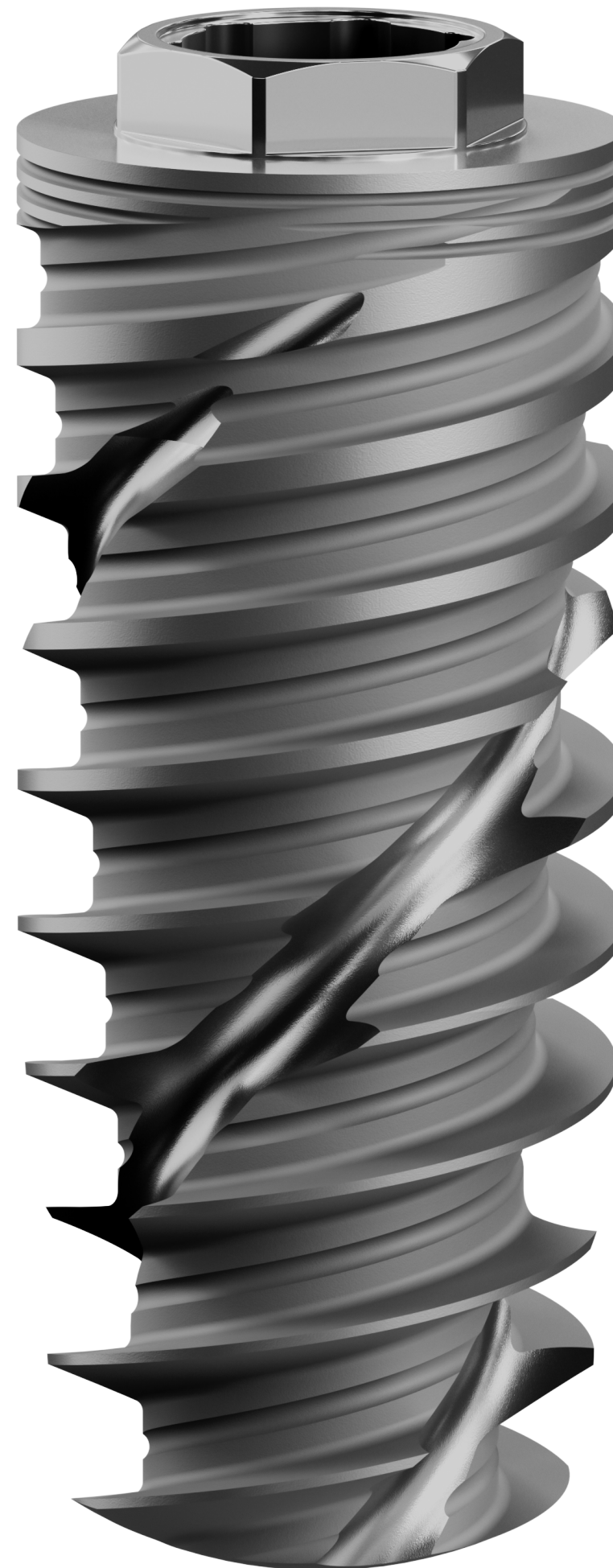
› More options of prosthetic components for Morse Taper

Internal Angulation of the Morse Taper available at 11.5°.

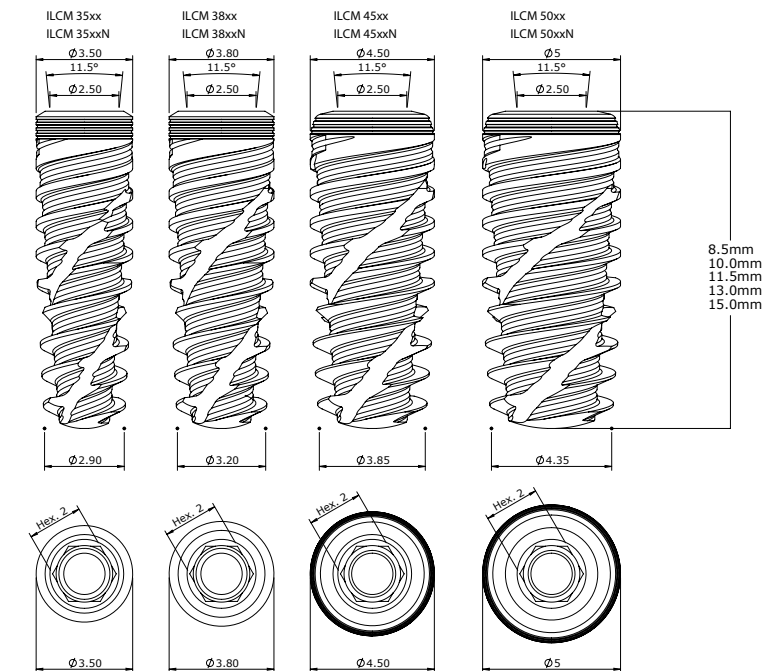


› Treatment on the entire surface

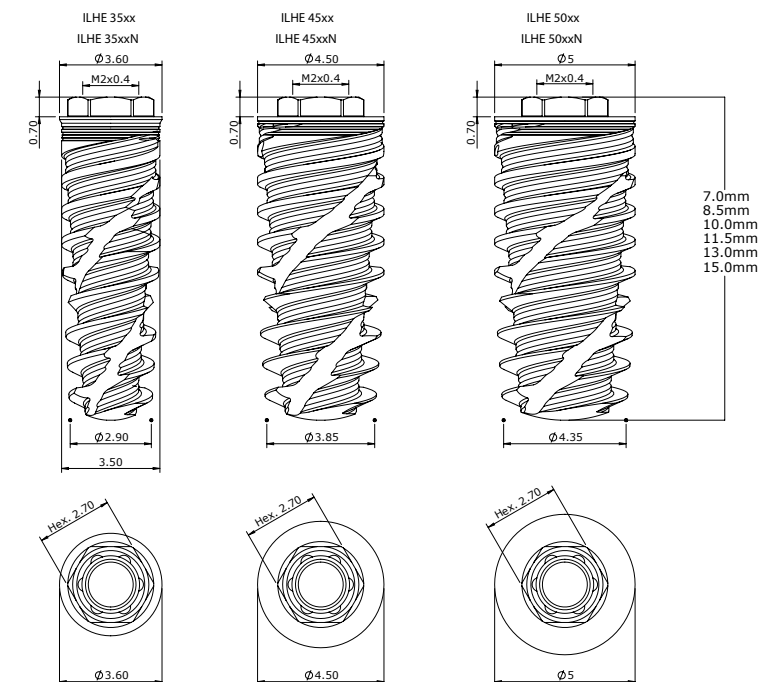
Double acid etching on the entire surface for Morse Taper. Implants with External Hex connection the double acid attack goes up to the cervical region.



Technical measures EPIKUT MORSE TAPER



Technical measures EPIKUT EXTERNAL HEX



INDICATIONS FOR CLINICAL USE:

- › 3.5 mm - Central incisors and lateral incisors
- › 3.8 mm - Canines and premolars
- › 4.5 mm - Premolars and molars
- › 5.0 mm - Molars

EPIKUT PLUS

THE UNBEATABLE COMBINATION OF DESIGN AND SURFACE THAT MAKE AN IMPLANT EPIC

EPIKUT PLUS was idealized for you who wants to redefine the concept of dental implants. With a cutting and compressive design, double inverted support screws, combined with the best surface Plus HAnano®, which accelerate the osseointegration, EPIKUT PLUS is the perfect combination for those seeking superior results and with high predictability.



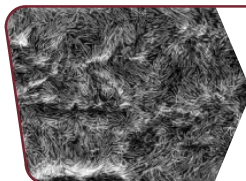
› Indicated for all bone types

The exclusive macro geometry that features progressive cutting screws design makes EPIKUT PLUS the state of the art for cases of immediate loading, low density bone, and post-extraction alveolus cases. Extremely versatile, EPIKUT PLUS also allows its use in other clinical situations as long as the indicated drilling clinical protocol is followed.



› Accelerated bone healing

The high hydrophilia, generated by an ultra-thin and homogeneous layer of hydroxyapatite, expands the activity of the proteins involved in the osseointegration process.



› Exclusive Plus surface

Developed in the main universities of Sweden, the nanosurface accelerates the osseointegration and promotes a higher bone quality, proven by over 50 preclinical studies.



› An implant with diverse possibilities

Morse Taper and External Hex connections making your day at the clinic easier.



› Clinical practicality

A single surgical kit for the installation of the complete EPIKUT and EPIKUT PLUS line.



 **PLUS**
HA^{nano} Surface

**MEET THE GOLDEN STANDARD
OF OSSEOINTEGRATION**

THINNER

Nanometric layer of
hydroxyapatite crystals.

FASTER

Better early bone growth and
strength and anchoring of the implant.

STRONGER

Hydrophilic surface that accelerates the functions of
osteoblasts, thus building more bone in less time.

Scanning Electron Microscopy demonstrating osteoblastic cell on HAnano® surface. Courtesy: Cavalcanti JH, Tanaka M, Bezerra FJ, CBPF RJ.

Find out more on the
surface Plus HAnano®
in our QRCode.



EPIKUT SAFE DRILL KIT

MAKING YOUR SURGERIES MORE PRACTICAL AND PRECISE

Performance and efficiency:
exclusive polyacetal limiters with
perfect fit and high resistance, which
guarantees greater durability of the kit.

Prevent injuries
noble structures
like nerves, bosom,
maxilla and nasal cavity.

The Epikut Safe Drill Kit
is only compatible with the
Epikut Surgical Kit.

Bone Drill Limiters available
for each drill diameter.

Removable tray to
facilitate cleaning.

Easy to use: color coding
system, which facilitates
clinical use.

For the Morse Taper installation to occur as recommended (infra-bone)
it is necessary to use a limiter 1.5 mm greater than the desired depth.



Safe Drill Kit

Remove

Max. Temp. Autoclave: 134 °C / 273.2 °F

5.0 6.0 7.0 8.5 10.0 11.5 13.0 15.0

Ø2.0 Ø2.7 Ø3.0 Ø3.3 Ø3.6 Ø4.0 Ø4.3 Ø4.8

Epikut

KESD 02 - REV.00

CODE: KESD 02

EPIKUT SURGICAL KIT

MAXIMUM FUNCTIONALITY AND SIMPLICITY FOR YOUR SURGERIES

Helical lance drill
optimizing surgical steps.

Linear and intuitive
sequence.

Unique drilling sequence for
each bone density increasing
clinical versatility.

Unique drills with DLC
(Diamond like carbon):
Less bone heating.
Increased durability.
High cutting power.
Sharper angle.

Direction indicator with
precise millimetre marking
for each diameter.

Single Kit for
MT and EH
platform.

Lighter and more
compact tray design.

Torque wrench: More
accurate measurement
of torque.



CHAVES DE FURAS

Extensor DRILL EXTENSION

Medidor CM MT METER

Hex. 1.2 SCREWDRIVER HEX. 1.2

Manual ADAPTER

CHAVES CONE MORSE MT DRIVERS

C.A. Longa HANDPIECE LONG

C.A. Curta HANDPIECE SHORT

Catraca Longa LONG TORQUE WRENCH

Catraca Curta SHORT TORQUE WRENCH

CHAVES H.E. H.E. DRIVERS

Sonda de profundidade DEPTH PROBE

Torquimetro TORQUE WRENCH

MACIO SOFT

MEDIO MEDIUM

DURO HARD

C (D) D (E) F (G) G (H)

DE USO OPCIONAL ATE 5 MM DE PROFUNDIDADE 5 mm DEPTH OPTIONAL DRILL

Max. Temp. Autoclave 134 °C / 273.2 °F

Epikut

KCSE 01 - REV.00

CODE: KCSE 01



Discover Implantat, the educational habitat of S.I.N. Implant System.

 [implantat.global](https://www.implantat.global)

+55 (11) 2169 3000
www.sinimplantsystem.com

Visit our social networks:

  @sinimplantglobal  S.I.N. Implant System